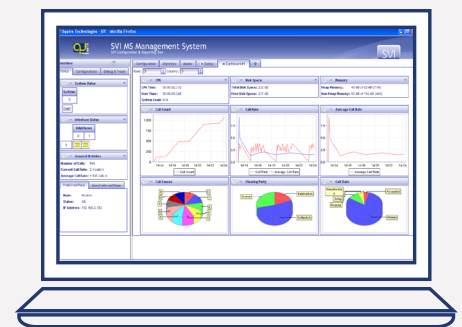
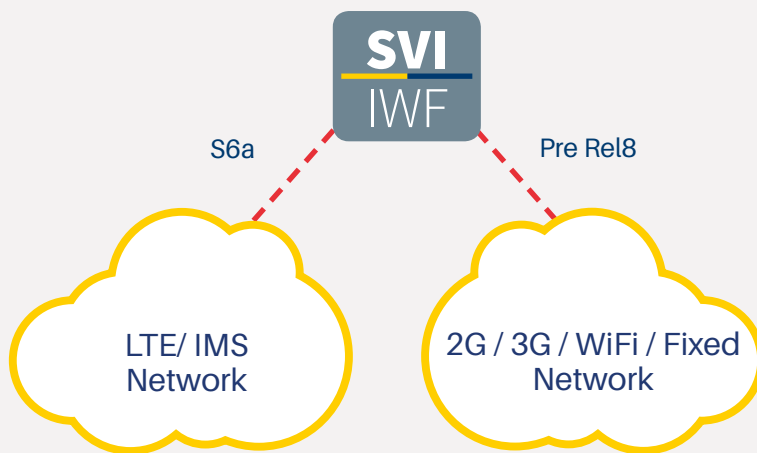


Product Datasheet

Jul. 14 / Rev. 1.0

SVI_IWF

SS7 MAP/ Diameter Interworking Function



The SVI_IWF is a 3GPP compliant Diameter to SS7 IWF (interworking function) that enables legacy solutions to be extended to LTE and IMS networks. It's a complete package that can be deployed in stand-alone mode or as an optional module for Squire Technologies' range of existing SG, STP, SBC, MG, MGCF and other solutions.

Offering configurable control of Diameter interfaces, including S6a, S6d, S13, S13a and more, it provides a critical link between 2G, 3G and Fixed infrastructure with LTE and IMS networks. It solves interoperability issues and enhances ROI, by protecting investments and enabling new service opportunities.

The SVI_IWF provides a cost-effective solution that seamlessly interconnects legacy and LTE / IMS networks. For service providers, equipment vendors and systems integrators that need to connect from LTE to legacy, or legacy to LTE, the SVI_IWF is a comprehensive, scalable solution that solves interworking challenges.

Benefits

- Connect legacy solutions to LTE / IMS networks
- Add Diameter capabilities to existing Squire Technologies' solutions
- Enhance ROI from existing solutions
- Access new services in LTE / IMS domain
- Built on proven technology, deployed worldwide

Features

- SS7 MAP / Diameter conversion to 3GPP TS 29.305
- RFC 6733 compliant
- Configurable AVP for comprehensive support of Diameter interfaces and variants
- Highly scalable
 - Up to 20,000 TPS
 - 1024 SS7 signalling links over SIGTRAN or TDM
- Flexible deployment options
 - Software-only, option for all Squire Technologies' solutions, including
 - SG, STP, SBC, MG, MGCF
 - Standalone Diameter Bridge
- High-performance dedicated servers and blades
- RADIUS interworking
 - Diameter / SS7 / RADIUS
 - Redundant configuration
- GUI driven

SVI_IWF

Technical Specifications

SS7 Dimensions

- SS7 Signalling links - 1024
- Originating Point Codes OPC - 32
- Destination Point Codes DPC - 1024
- Linksets - 64
- A, B, C, D, E, F SS7 Signalling link
- HSL - (High Speed Links)
- M2PA links - 1024

Supported Protocols

- MTP L1-L3
 - ITU-T Q.701-707
 - ANSI T1-111.1-111.8
 - NTT Q.701-704
 - JT-Q.701-704
 - Chinese GF 001-9001
 - PNO-ISC/SPEC/005

SCCP

- ITUT Q711-Q714
- JT-Q711-G714
- ETSI ETS 300 589
- ANSI T1.112

SIGTRAN

- M2UA RFC 3331
- M3UA RFC 3332
- SUA RFC 3868
- M2PA RFC 4165

TCAP

- ITUT Q771-Q775
- ANSI T1.114

CAMEL

- CAP 3GPP TS 23.078

SS7 MAP/ Diameter Interworking

- 3GPP TS 29.305

MAP

- MAP 3GPP TS 29.002 v3.11.0
- IS-41 TIA/EIA-42-D

VoIP Supported Protocols

- SIP Version 2
- SIP-I ITU Q.1912
- SIP-T RFC 3372

Diameter

- IETF RFC 6733

OA&M

- Web based GUI and CLI interface
- Remote / Onboard configuration
- Real-time configurable log-files
- Detailed protocol debug
- Wireshark / Ethereal compatible
- Onboard CDRs
- Call Statistics
- Real-time traps and alarms

SNMP

- SNMP Version 2

System Logging

- Real time configurable logging levels
- Detailed protocol debug
- System and exception logs
- User and Admin history

Hardware Options Chassis

- Based on client requirements
 - From entry level chassis 1U, 2U and 4U to high availability 8U
 - AC + DC PSU supported
- Environmental
 - EN55022
 - EN55024
 - CISPR 22,
 - 47 CFR 15 (ANSI C63.4: 1992)
- Safety
 - BSEN 60950
 - EN41003: 1998
 - IEC CB Scheme 1950 Third Edition

Support



Squire Technologies provides a range of post-sales support packages to meet client requirements and budget. These range from 6 months web and email support provided free of charge on all purchased products to dedicated 24/7 telephone support



Follow us on LinkedIn



Follow us on Twitter

Squire Technologies

www.squire-technologies.co.uk

Tel:

+44 (0)1305 757 314

Fax:

+44 (0)1305 757 309

Email:

enquiries@squire-technologies.co.uk