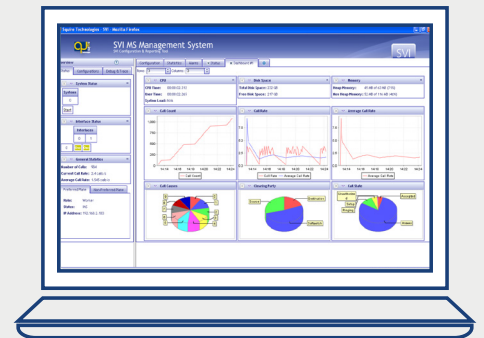


Product Datasheet

Jul. 14 / Rev. 1.0

SVI_MGC

SS7 Media Gateway Controller



The SVI_MGC SS7 Media Gateway Controller enables SS7 on leading VoIP Media Gateways using industry based standards - MGCP, MEGACO H.248, SIGTRAN, SIP, SIP-I, SIP-T and H.323.

The globally deployed product enables clients to interface their VoIP networks to traditional SS7 PSTN based telephone networks allowing the rapid launch of VoIP services, NAS Modem Dial-Up and distributed networks with industry leading VoIP Media Gateways from Cisco, AudioCodes and Alcatel-Lucent.

Benefits

- Excellent ROI – allows clients to deploy SS7 on Media Gateways already in their existing networks
 - Multi vendor choice – MGC supports multi-vendor Media Gateways allowing clients to choose the media gateway to match their requirements – not tying clients to any single vendor
 - Investment in equipment is based on real demand - scale the SVI_MGC to match clients bandwidth requirements as and when needed through software-based license key updates.
 - Software deployment model allows rapid remote deployment and avoids shipping / import issues
- Couple these features with full Dual Plane Redundancy support providing automatic failover for unparalleled reliability.
- Full support for RADIUS and SQL database standards, optional integrated Web Based Wholesale billing solution, a fully featured OA&M (Operations Administration and Maintenance) interface providing secure remote access, real time configuration, intelligent call routing, detailed logfiles, onboard CDRs, web based SNMP performance monitoring solution the SVI_MGC provides a full end-to-end carrier grade SS7 to VoIP product solution.

Features

- Comprehensive web GUI/CLI interface
- Standards based SIGTRAN, MGCP, MEGACO, SIP and H.323
- Compliant with industry leading media gateways, Cisco, AudioCodes and Alcatel-Lucent
- Scales to 10,000 simultaneous calls using software license key upgrades
- 128 SS7 signalling links
- Dual plane redundancy for automatic fail-over
- Full featured OA&M
- Intelligent Call Routing

SVI_MGC

Technical Specifications

SS7 Dimensions

- SS7 Signalling links - 2 to 128
- Originating Point Codes OPC - 32
- Destination Point Codes DPC - 1024
- Linksets - 128
- A, F SS7 link support

PSTN Supported Protocols

- SS7 - ANSI, ETSI, ITUT and over 50 variants
- ISDN - ETSI, ITUT, ANSI and country/switch variants

VoIP Supported Protocols

- **SIP**
 - RFC 3261 Session Initiate Protocol
 - RFC 2976 SIP INFO Method
 - RFC 3398 ISUP-SIP Mapping
 - RFC 3515 Refer Method
 - RFC 3578 Overlap
 - RFC 2327 Session Description Protocol
 - RFC 3581 An Extension to the Session Initiation Protocol (SIP) for Symmetric Response Routing
 - RFC 3665 Session Initiation Protocol (SIP)
 - Basic Call Flow Examples
 - RFC 3666 Public Switched Telephone Network (PSTN) Call Flows
 - RFC 3892 Referred-By Mechanism
 - RFC 3891 "Replaces" Header
 - RFC 4566 Session Description Protocol
 - RFC 5806 Diversion Indication in SIP
 - RFC 3326 The Reason Header Field
 - RFC 2543 Session Initiation Protocol
 - RFC 3262 Reliability of Provisional Responses
 - draft-levy-sip-diversion
 - draft-ietf-sip-privacy
- **SIP-T**
 - RFC 3372 Session Initiation Protocol for Telephones (SIP-T)
- **SIP-I**
 - ITU Q.1912 for ISUP/C7-to-SIP interworking
- **H.323**
 - IITU Version 2 and 4
 - Fast and Slow Start
 - Gateway and Gatekeeper interconnect

SIGTRAN

- M2UA, M3UA, SUA, M2PA, IUA

Scalability

- Supports up to 10,000 simultaneous calls
- Simple license key upgrades
- Supports up to 100 media gateways

Routing and Call Management

- Called/Calling Party Number
- Originating Route
- Time of Day / Week
- Reattempt on alternative routes
- Call blocking
- Digit Manipulation
- Protocol Manipulation
- SQL Support for mySQL, PostgreSQL

Redundancy

- 1 + 1 Dual Plane worker/standby
- Automatic fail-over
- Single IP - VIP address

Statistics

- Call statistics (Ingress, egress)
- ASR, PDD, ACD, QoS (native and SNMP)
- CDR analysis

SNMP

- SNMP Version 2

Billing

- CDR - CSV format for easy analysis
- Automated FTP upload
- RADIUS - RFC 2139, 2138 Cisco VSA compliant
- Integrated Wholesale Billing Platform

System Logging

- Real time configurable logging levels
- Detailed protocol debug
- System and exception logs
- User and Admin history

Hardware Options

Physical Interfaces

- Dependant on Deployment
- E1/T1/T3 J1 (configurable) STM-1/DS3/OC3

Form Factor

- PCI

Environmental

- EN55022, EN55024, CISPR 22, 47 CFR 15 (ANSI C63.4: 1992)

Safety

- BSEN 60950
- EN41003: 1998
- IEC CB Scheme 1950 Third Edition

Support



Squire Technologies provides a range of post-sales support packages to meet client requirements and budget. These range from 6 months web and email support provided free of charge on all purchased products to dedicated 24/7 telephone support