

## Product Datasheet

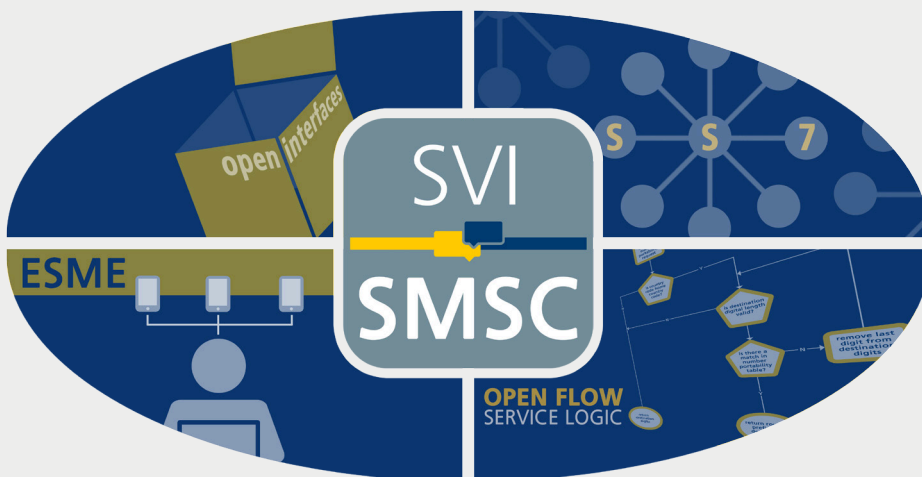
Nov. 16 / Rev. 1.0

# SVI\_SMSC

## Short Message Service Centre

With the continued growth in A2P SMS traffic and MVNO generated SMS there is a requirement for an industry standard SMSC that not only offers feature rich, carrier grade functionality but also flexibility.

Today's SMSC needs to be able to rapidly evolve to meet the demands of A2P and MVNO applications. The SVI\_SMSC provides this through its innovative Open Flow Service Logic technology and Open Interfaces that allow for the rapid, real-time provisioning of new value-added services.



### FEATURES

- Scalable to 50,000 SMS/s
- SMPP support v3.4 to v5
- SS7 + SIGTRAN Interconnects
- Multiple SMS encoding formats
- Innovative Open Flow Service Logic
- NFV Compliant
- Open Interface HTTP, SMPP, XML, SOAP, SQL support
- USSD Gateway support
- Comprehensive web based OA&M
- High Availability support

### BENEFITS

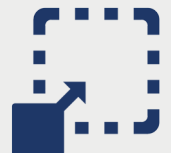
#### Feature Rich

Deployed worldwide and compliant with all major industry standards delivering comprehensive carrier grade SMSC



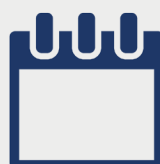
#### Scalable

Modular design provides support for high load A2P applications allowing clients to scale to 50,000 SMS/s



#### Future Proof

Flexible service logic and open interfaces enables the rapid delivery of new, service differentiating Value Added Services. Innovative design insures NFV compliance.



#### Cost effective

Low cost entry price with flexible license model to match budget expectations, scale of deployment and future growth.




# SVI\_SMSC

## Future Proof

### Open Flow Service Logic

The SVI-SMSC uses the innovative Open Flow Service Logic technology to deliver comprehensive and robust SMSC functionality:


 **SMS Delivery**  
Store and Forward, Retries, Throttling

 **Routing**  
Home Routing, LCR, Priority, Multiple Network

 **Filtering**  
Black List / White List  
Filter against SMS content, MAP, MTP and SCCP

 **Mobile Number Portability**

 **Roaming**

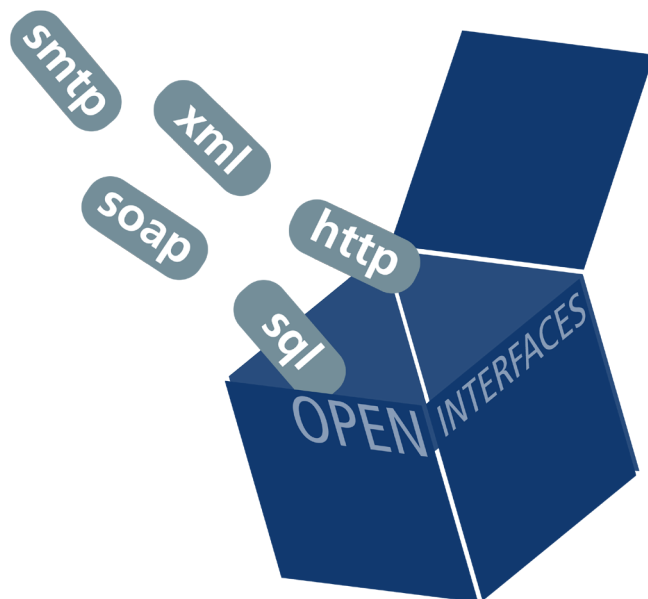
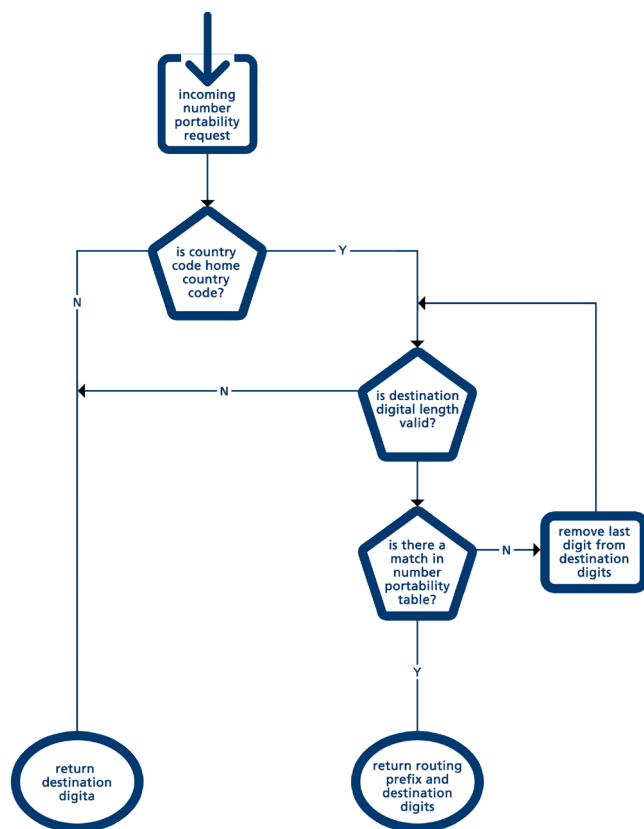
 **Pre-pay and Real Time Charging**

### Open Interfaces

The SVI-SMSC's Open Interfaces provides comprehensive support for a range of industry standard interfaces HTTP, SMTP, SOAP, SQL, XML. This allows ease of integration into clients OSS/BSS infrastructure with communication to the SVI-SMSC provided over our clients preferred interface(s).

Combining the Open Flow Service Logic and the Open Interfaces enables the SVI-SMSC to deliver a flexible, future proof solution driven by our customers evolving requirements.

This service logic technology can be used to rapidly provision new, innovative, value-added-services in real-time. Our clients either provision the new services themselves or make use of Squire Technologies provisioning team.



# SVI\_SMSC

## Technical Specifications

### Physical Dimensions

#### Physical interfaces

- E1/T1 J1 (configurable)

#### Scaling

- 2 to 128 SS7 Signalling Links

#### Form Factor

- PCI

#### Chassis

- 1U Telco Standard

### SS7 Dimensions

- SS7 Signalling links - 128
- Originating Point Codes OPC - 32
- Destination Point Codes DPC - 1024
- Linksets - 128
- A - F SS7 link support

### SIGTRAN

- M2UA RFC 3331
- M3UA RFC 4666
- SUA RFC 3868
- M2PA RFC 4165

### Redundancy

- 1 + 1 Dual Plane worker/standby
- Automatic fail-over
- Single IP - VIP address

### Network Security

- Integrated Firewall
- Username, password protected
- Secure external protocols (SSH, SCP)
- Reports on unauthorised access

### Open Interfaces

- HTTP, SMPP, XML, SOAP, SQL

### MAP Specifications

- MAP 3GPP TS 29.002 v13.5.0
- MAP 3GPP TS 23.040 v13.2.0
- IS-41 TIA/EIA-42-D

### SMS

- Binary, Unicode, EuroCharacter IA5
- Concatenated
- Sender ID Masking
- Delivery Reports
- Alpha Numeric Addresses for MT SMS

### SMPP

- SMPP v3.4 interface
- Up to v5.0

### OA&M

- Web based GUI and CLI interface
- Remote / Onboard configuration
- Real-time configurable log-files
- Detailed protocol debug
- Wireshark / Ethereal compatible
- Onboard CDRs
- Call Statistics
- Real-time traps and alarms

### Hardware Options

Chassis options depending on customer requirements

- Standard entry level chassis 1U Hardware High Availability chassis -48 DC and 240 AC

#### Environmental

- EN55022, EN55024, CISPR 22, 47 CFR 15 (ANSI C63.4: 1992)

#### Safety

- BSEN 60950
- EN41003: 1998
- IEC CB Scheme 1950 Third Edition

### Support



**Squire Technologies provides a range of post-sales support packages to meet client requirements and budget. These range from 6 months web and email support provided free of charge on all purchased products to dedicated 24/7 telephone support**